

Stamp Shows/Exhibitions

South African Philatelists have over the years consistently been involved in exhibiting at international shows. Up until 1976 when the Post Office issued the first two commemorative date stamps, it was the classical “business as usual” exhibiting. After 1976 the Philatelic Bureau would produce date stamps, miniature sheets and commemorative Cancel to Order (CTO) souvenir envelopes

The Philatelic Federation of South Africa is a full member of the International Philatelic Federation (FIP) and an associate member of the Federation of Inter Asian Philately (FIAP), and hence its part of their International Stamp Exhibitions.

Date Stamps, covers and miniature sheets issued

These were cards or covers that were used to promote South African philately at the exhibitions/shows held throughout the world. In 1972 the Philatelic Bureau became a Philatelic Division at the Post Office and a manager was appointed to promote/market philately in general. Soon there was a surfeit of collector’s sheets, datestamp cards and maximum cards. Then in 1984 the Philatelic bureau was appointed as the agent for the issues of South West Africa and the TBVC “Homelands. (Transkei, Bophuthatswana, Venda and Ciskei). In this capacity no less than 2,463 million first day covers and 345 million maximum cards and 760,000 sheets were printed in respect for 1984’s issues for the six countries. Based on that one can appreciate that the market is saturated with these products and their value is really pretty low. However for the sake of completeness, these covers related to stamps shows and philatelic exhibitions have been included. (Guest Editorial, S.A. Philatelist, February 2006.).

The dates of activation of the TBVC States were: Transkei 26 October 1976, Bophuthatswana 6 December 1977, Venda 13 September 1979 and Ciskei 27 April 1981.

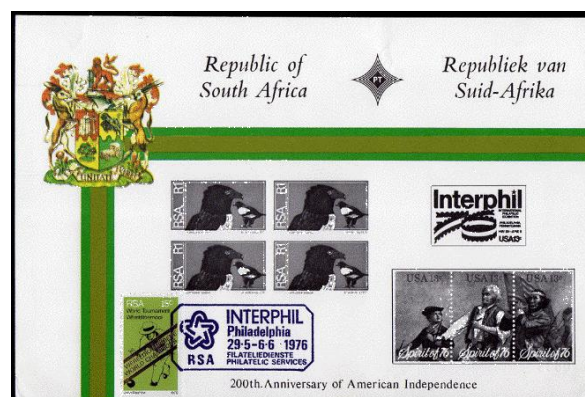
Interphil 1976

Philadelphia, Pennsylvania hosted the 7th American based International Philatelic Exhibition, IPEX, from 29 May to 6 June 1976, under the name INTERPHIL. There were 3000 frames from 600 exhibitors.



SAPES1976ds-1.
cancellation.

Interphil. With cds.



SAPES1976ds-2. Interphil. With Interphil

Dim. 225 x 148mm.
For both.



SAPES1976ds-3. Post card with RSA cancellation.



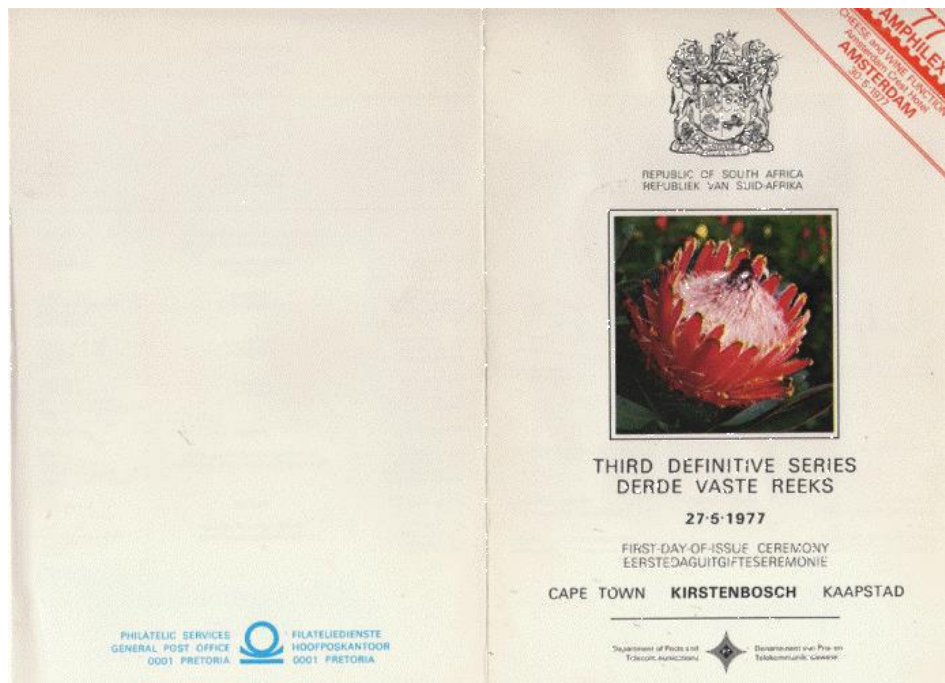
SAPES1976ds-4. Post card with SWA cancellation.

Hafnia, 1976: Copenhagen, Denmark.

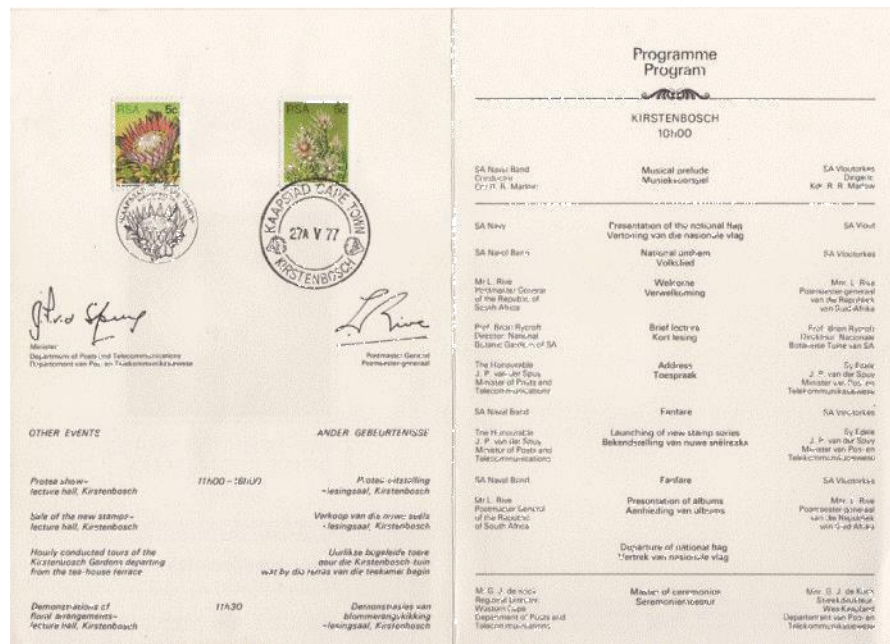


SAPES1976ds-5 Date stamp card with cds.

Amsterdam World Stamp Exhibition: AMPHILEX 77, 26 May – 7 June 1977. The South African Commissioner at this exhibition was Herman Steyn.

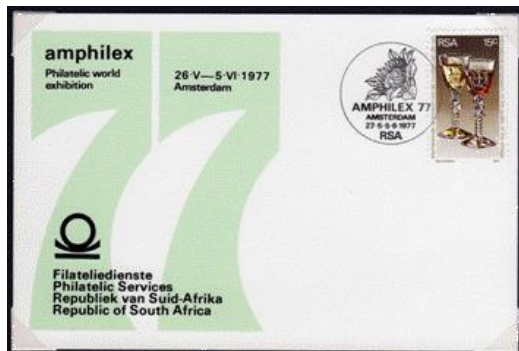


SAPES1977ds-2. Official Brochure for Amphilex. Outer cover. Page dim. 145 x 210mm.

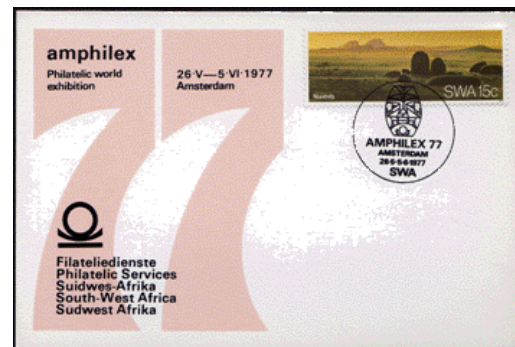


SAPES1977ds-2. Inside view of Amphillex official brochure.

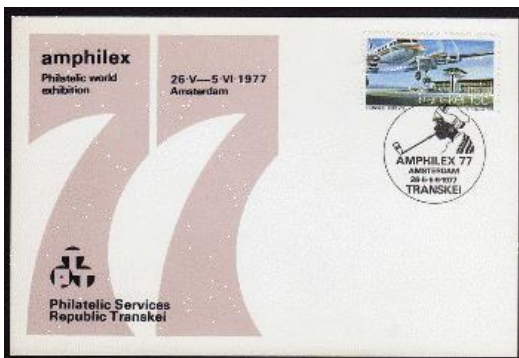
Date stamp cards produced for the stamp issuing entities:



SAPES1977ds- 3. Dim. 150 x 100mm.



SAPES1977dsn-1. Dim. 150 x 100mm.

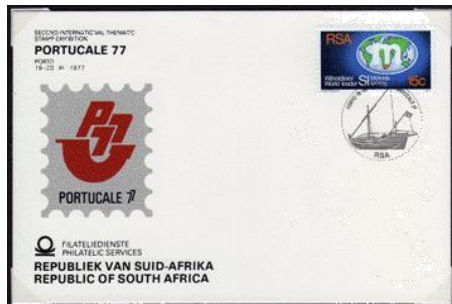


SAPES1977dst-1. Dim. 150 x 100mm.

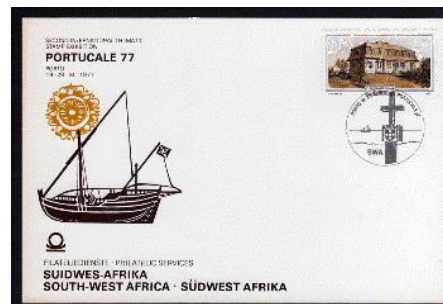
Reference(s):

SAP, July 1977, 174. SAP, August 1977, 202 207/8.
SAP, September 1977, 226/7.

Portucale 77, 1977



SAPES1977ds- 4. Dim. 150 x 100mm.



SAPES1977dsn-2. Dim. 150 x 100mm.



SAPES1977dst-2. Dim. 150 x 100mm.

Reference(s):

SAP, October 1977, 261.

CAPEX 78, 1978



SAPES1978ds-1. Dim. 150 x 100mm.



SAPES1978dsn-1. Dim. 150 x 100mm.



SAPES1978dst-1. Dim. 150 x 100mm.

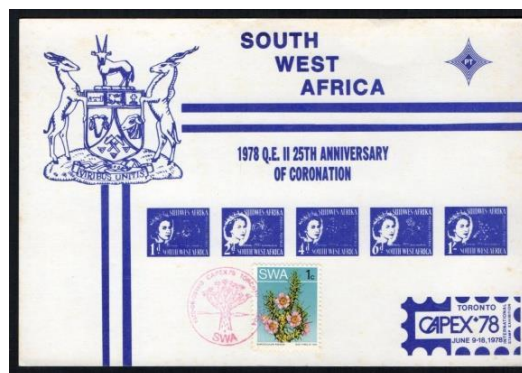


SAPES1978dsb-1. Dim. 150 x 100mm



SAPES1978ds-2. Red date stamp.

Dim. 178 x 121mm.



SAPES1978dsn-2. Red date stamp



SAPES1978pm-1.T17 (322). SAPES1978pm-2.

Reference(s):

SAP, October 1978, 281.

Essen, 1978



SAPES1978ds-3.

Size 150 x 100mm.



SAPES1978dsn-2.

Size 150 x 100mm.



SAPES1978dst-2.

Size 150 x 100mm.



SAPES1978dsb-2.

Size 150 x 100mm.



SAPES1978pm-1.



SAPES1978pmt-1



SAPES1978pmb-1



SAPES1978pmn-1

Essen, 1980



SAPES1980ds-1.

Size 175 x 100mm.



SAPES1980dsn-1.

Size 175 x 100mm.



SAPES1980dst-1.

Size 175 x 100mm.



SAPES1980dsb-1.

Size 175 x 100mm



SAPES1980dsv-1.

Size 175 x 100mm.

WIPA 81: Wiener International Postage Stamp Exhibition: 22 – 31 May 1981, Vienna.

The South African Postal Authorities produced a series of date stamp cards with WIPA 81 special cancellations (CTO).



SAPES1981ds-1. Size 175 x 100mm.



SAPES1981dsn-1. Size 175 x 100mm.



SAPES1981dst-1. Size 175 x 100mm.



SAPES1981dsb-1. Size 175 x 100mm.



SAPES1981dsv-1. Size 175 x 100mm

Essen 82, 1982



SAPES1982ds-1. Size 175 x 100mm.



SAPES1982dsn-1. Size 175 x 100mm.



SAPEdst1982-1.

Size 175 x 100mm.



SAPEdsb1982-1.

Size 175 x 100mm.



SAPEdsdv1982-1.

Size 175 x 100mm.



SAPEdsdc1982-1.

Size 175 x 100mm.

Belgica 82, Brussels 1982



SAPEds1982-2. Size 175 x 100mm.



SAPEdst1982-2.

Size 175 x 100mm.



SAPEdsn1982-2.

Size 175 x 100mm.



SAPEdsb1982-2.

Size 175 x 100mm.



SAPESdsv1982-2. Size 175 x 100mm.

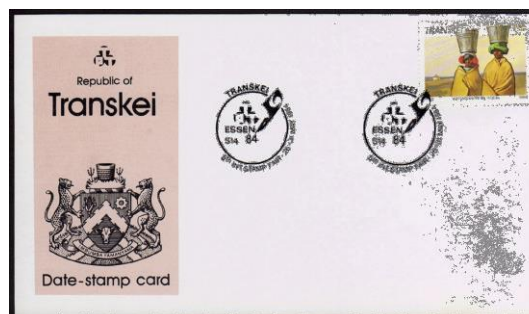


SAPESdsc1982-2. Size 175 x 100mm

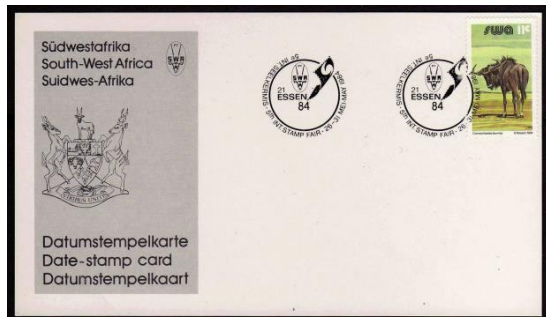
Essen 84, 1984



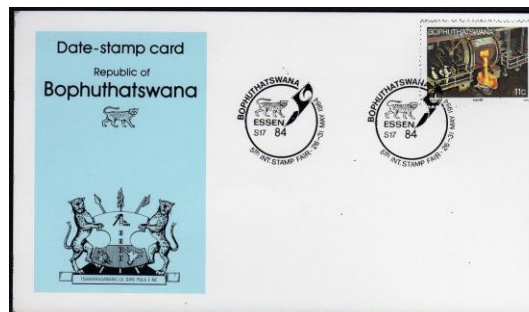
SAPES1984ds-1. Size 175 x 100mm.



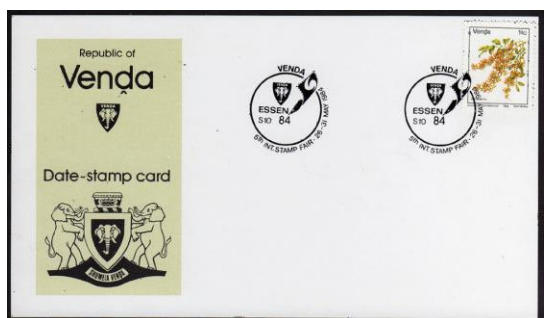
SAPES1984dst-1. Size 175 x 100mm.



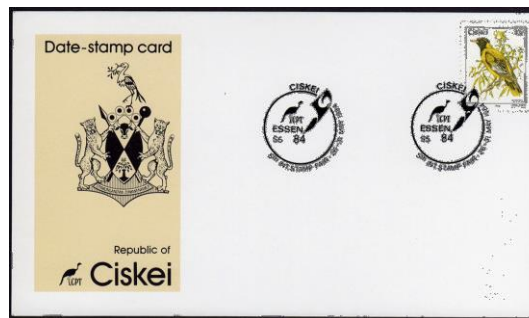
SAPES1984dsn-1 Size 175 x 100 mm.



SAPES1984dsb-1. Size 175 x 100mm.



SAPES1984dsv-1. Size 175 x 100mm.

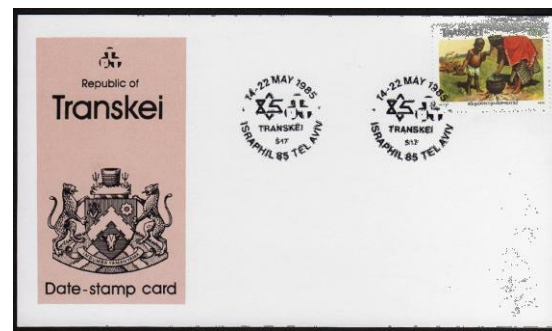


SAPES1984dsc-1. Size 175 x 100mm.

Israel 85



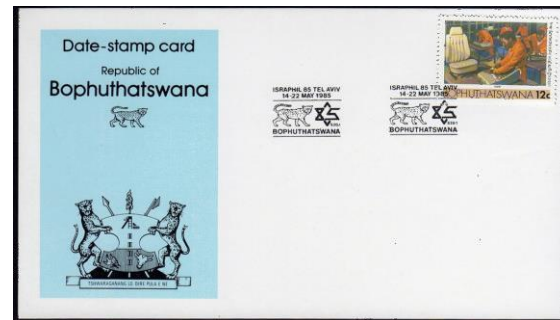
SAPES1985ds-1. Size 175 x 100mm.



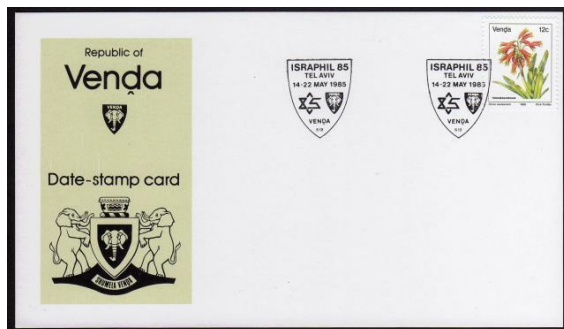
SAPES1985dst-1. Size 175 x 100mm.



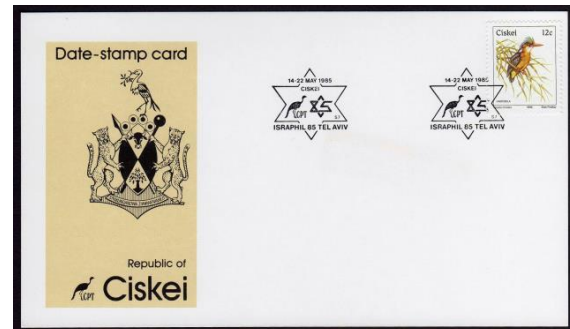
SAPES1985dsn-1. Size 175 x 100mm.



SAPES1985dsb-1. Size 175 x 100mm.



SAPES1985dsv-1. Size 175 x 100mm.

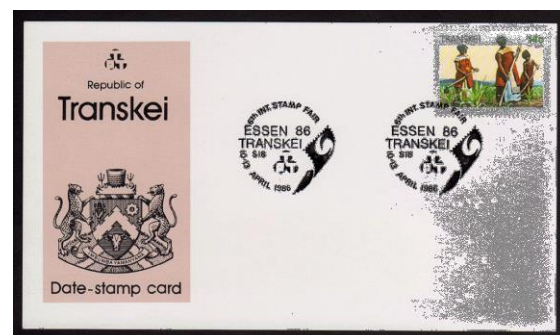


SAPES1985dsc-1. Size 175 x 100mm.

Essen 1986: Essen 10 – 13 April.



SAPES1986ds-2. Size 175 x 100mm.



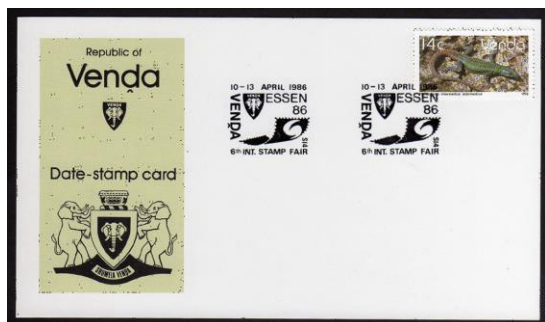
SAPES1986dst-2. Size 175 x 100mm.



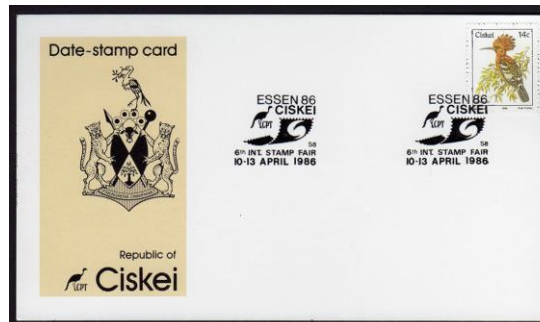
SAPES1986dsn-2. Size 175 x 100mm.



SAPES1986dsb-2. Size 175 x 100mm.

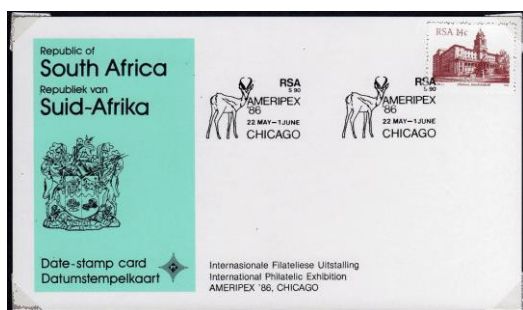


SAPES1986dsv-2. Size 175 x 100mm.

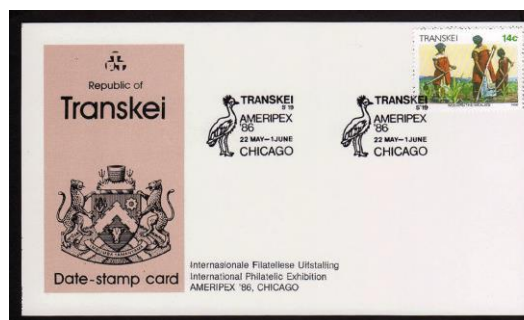


SAPES1986dsc-2. Size 175 x 100mm.

Ameripex 86: Chicago, 22 May – 1 June.



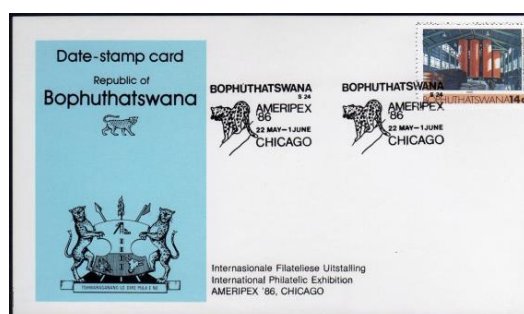
SAPES1986ds-3 . Dim. 175 x 100mm.



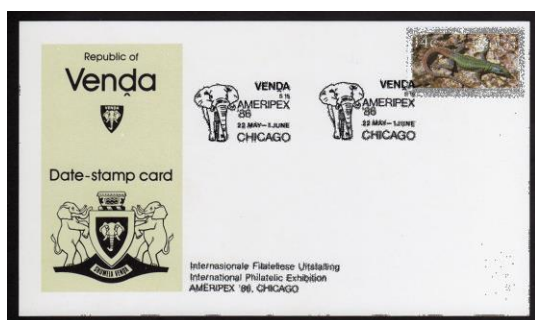
SAPES1985dst-3. Dim. 175 x 100mm.



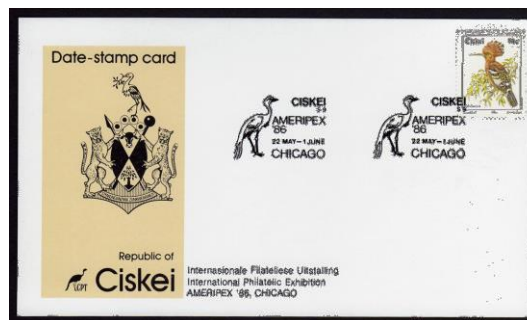
SAPES1986dsn-3. Dim. 175 x 100mm.



SAPES1986dsb-3. Dim. 175 x 100mm.



SAPES1986dsv-3. Dim. 175 x 100mm.



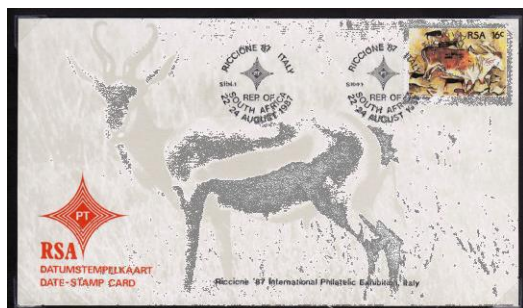
SAPES1986dsc-3. Dim. 175 x100mm.

In addition to the date stamps cards the SA Post Office staff manning the stand used the date stamp on an official souvenir cover and produced a “combination” cover.

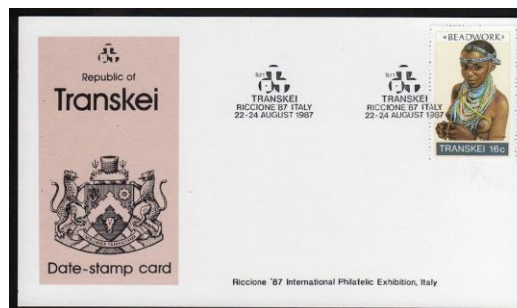


SAPES1986ds-2.

Riccione '87: 22 – 24 August, Riccione, Italy.



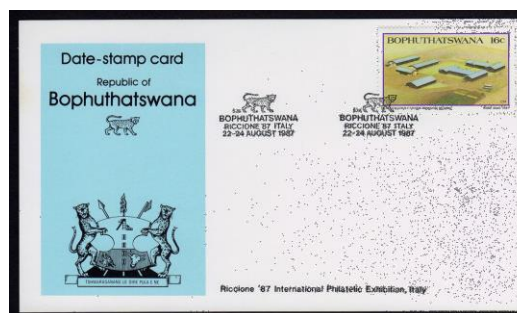
SAPES1987ds-1. Dim.175 x 100mm.



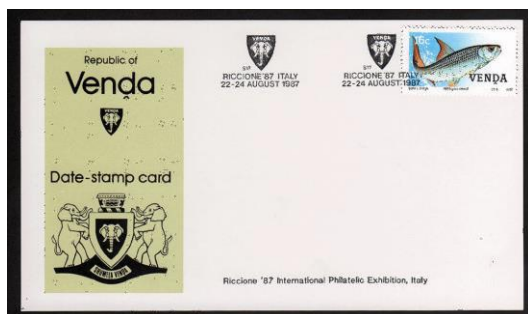
SAPES1987dst-1. Dim. 175 x 100mm.



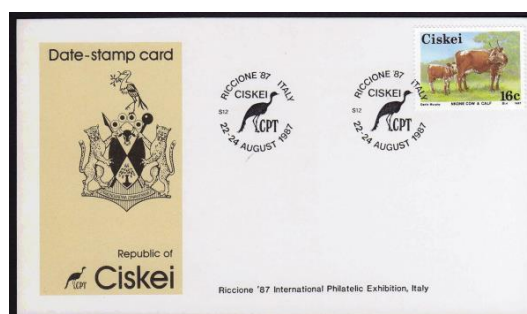
SAPES1987dsn-1. Dim. 175 x 100mm.



SAPES1987dsb-1. Dim.175 x100mm.

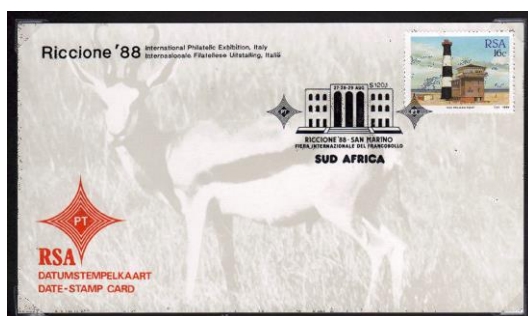


SAPES1987dsv-1. Dim. 175 x 100mm.

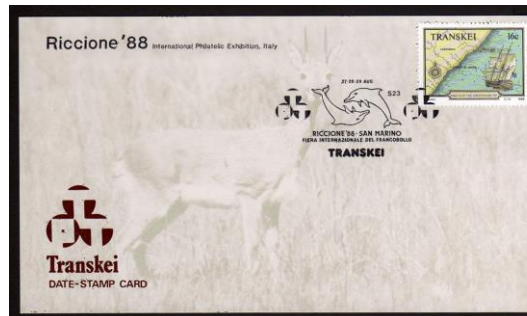


SAPES1987dsc-1. Dim. 175 x100mm.

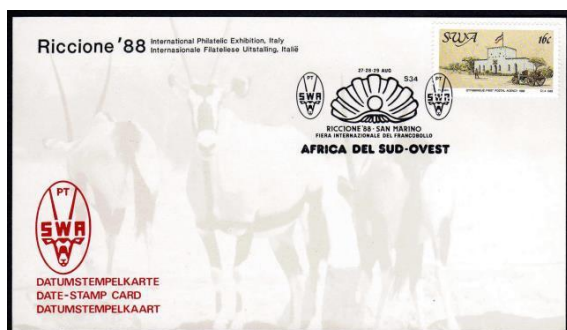
Riccione '88:



SAPES1988ds-1. Dim. 175 x 100mm.



SAPES1988dst-1. Dim. 175 x 100mm.



SAPES1988dsn-1. Dim. 175 x 100mm.



SAPES1988dsb-1. Dim. 175 x 100mm



SAPES1988dsv-1. Dim. 175 x 100mm.



SAPES1988dsc-1. Dim. 175 x100mm.

Riccione '89:



SAPES1989ds-1 . Dim. 175 x 100mm.



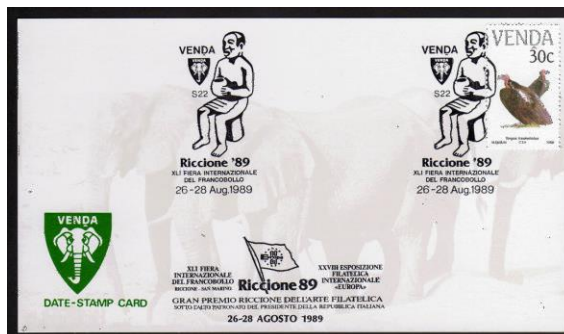
SAPES1989dst-1. Dim. 175 x100mm.



SAPES1989dsn-1. Dim. 175 x 100mm.



SAPES1989dsb-1. Dim. 175 x 100mm.

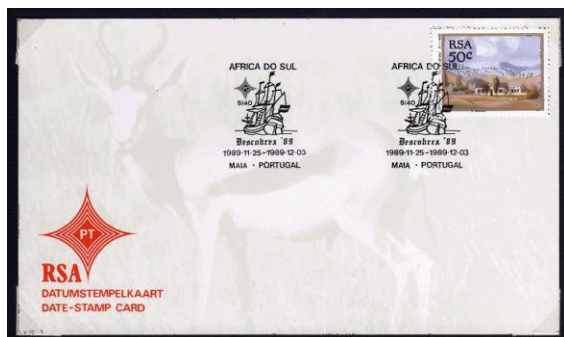


SAPES1989dsv-1. Dim. 175 x 100mm.

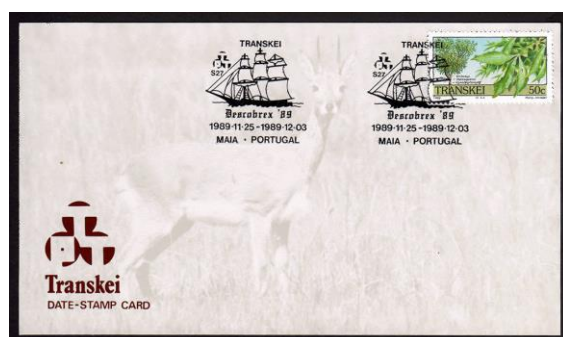


SAPES1989dsc-1. Dim. 175 x 100mm.

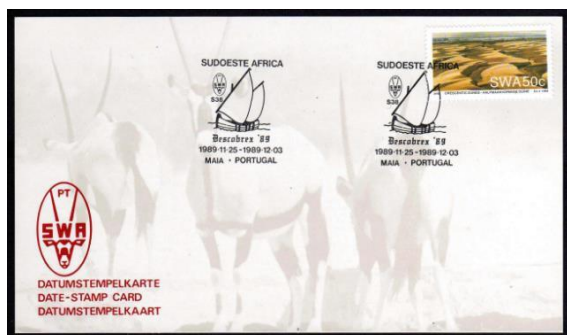
Descorbrex '89: 25 November – 3 December. Maia, Portugal.



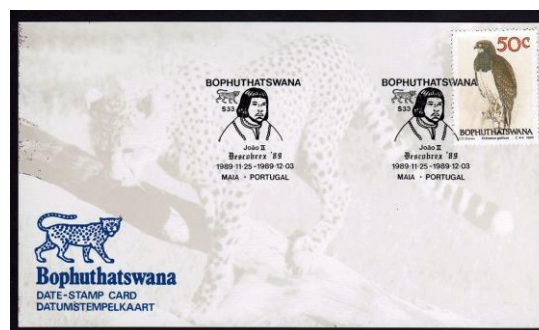
SAPES1989ds-2. Dim. 175 x 100mm.



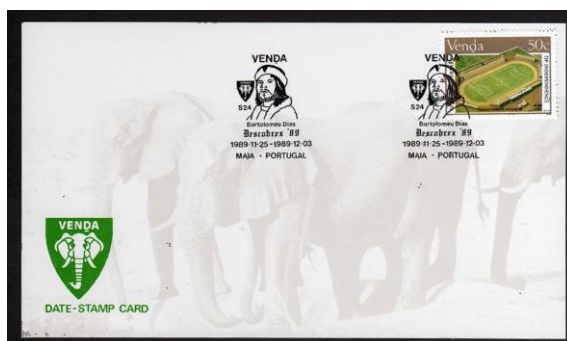
SAPES1989dst-2. Dim. 175 x 100mm.



SAPES1989dsn-2. Dim. 175 x 100mm.



SAPES1989dsb-2. Dim. 175 x 100mm.



SAPES1989dsv-2. Size Dim. x 100mm.

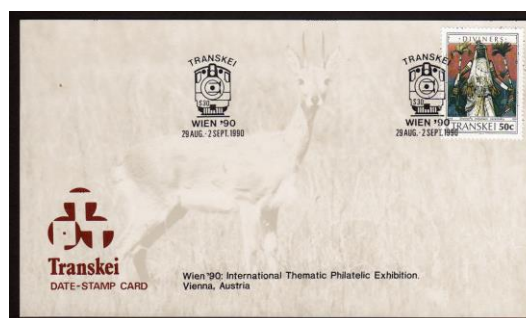


SAPES1989dsc-2. Dim. 175 x 100mm.

Wien '90: 29 August – 2 September. Vienna, Austria.



SAPES1990ds-1. Dim. 175 x 100mm.



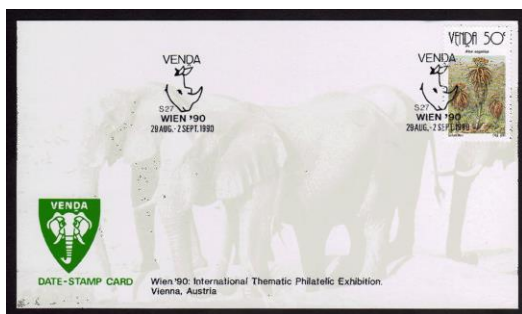
SAPES1990dst-1. Dim. 175 x 100mm.



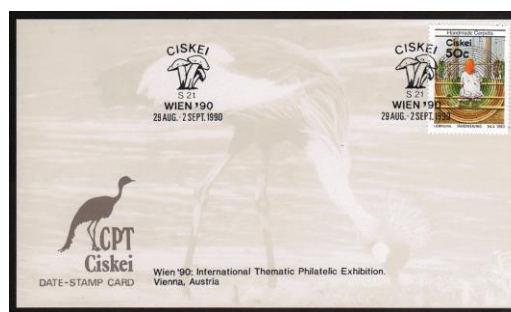
SAPES1990dsn-1. Dim. 175 x 100mm.



SAPES1990dsb-1. Dim. 175 x 100mm.



SAPES1990dsv-1. Dim. 175 x 100mm.

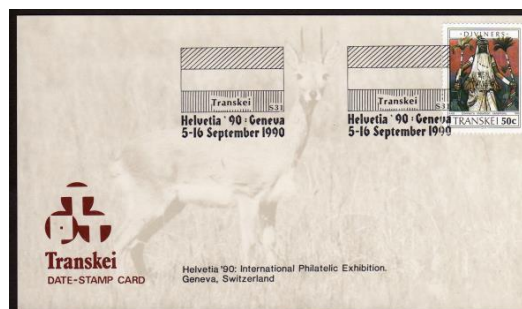


SAPES1990dsc-1. Dim. 175 x 100mm.

Helvetia '90: 5 – 16 September. Geneva, Switzerland.



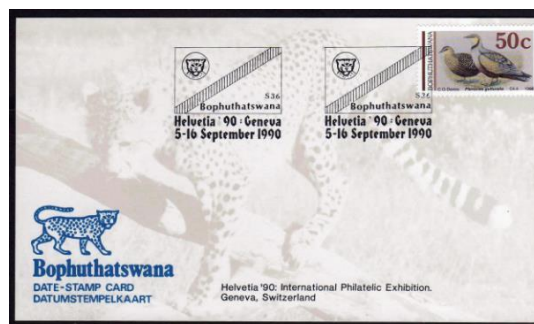
SAPES1990ds-2. Dim. 175 x 100mm.



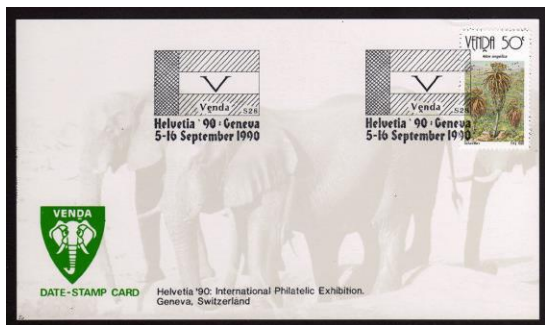
SAPES1990dst-2. Dim. 175 x 100mm.



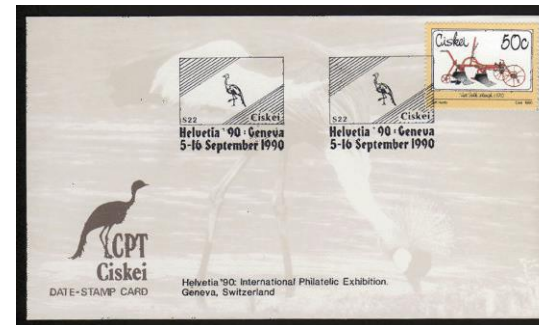
SAPES1990dsn-2. Dim. 175 x 100mm.



SAPES1990dsb-2. Dim. 175 x 100mm



SAPES1990dsv-2. Dim. 175 x 100mm.



SAPES1990dsc-2. Dim. 175 x 100mm.

PhilaNippon '91:



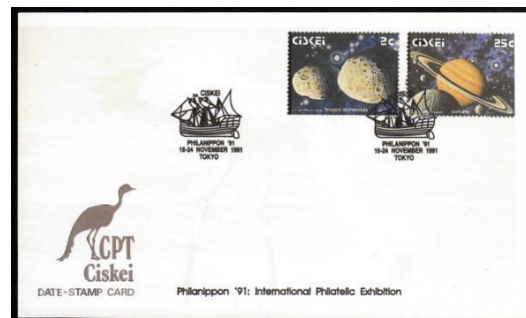
SAPES1991ds-1. Dim. 175 x 100mm.



SAPES1991dst-1. Dim. 175 x 100mm.



SAPES1991dsb-1. Dim. 175 x 100mm.



SAPES1991dsc-1. Dim. 175 x 100mm.

No date stamp produced for Namibia.

Granada '92: World Stamp Exhibition.



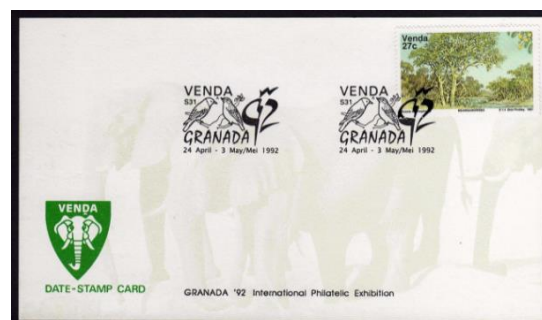
SAPES1992ds-2. Dim. 175 x 100mm.



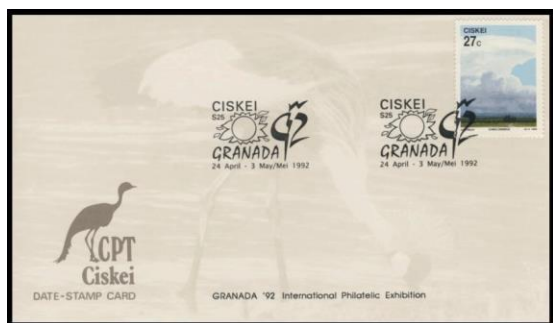
SAPES1992dst-2. Dim. 175 x 100mm.



SAPES1992dsb-2. Dim. 175 x 100mm.



SAPES1992dsv-2. Dim. 175 x 100mm.



SAPES1992dsc-3. Dim. 175 x 100mm.

Essen '92:



SAPES1992ds-3. Dim. 175 x 100mm.



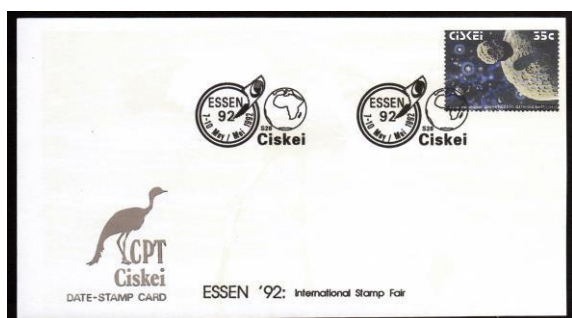
SAPES1992dst-3. Dim. 175 x 100mm.



SAPES1992dsb-3. Dim. 175 x 100mm.



SAPES1992dsv-3. Dim. 175 x 100mm.

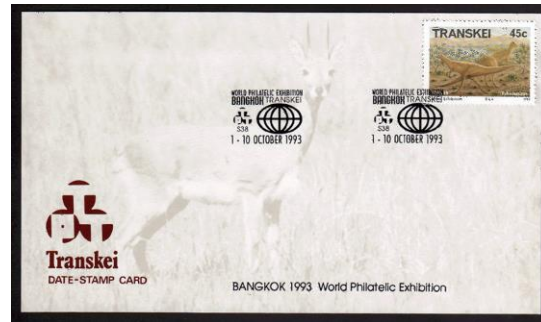


SAPES1992dsc-3. Dim. 175 x 100mm.

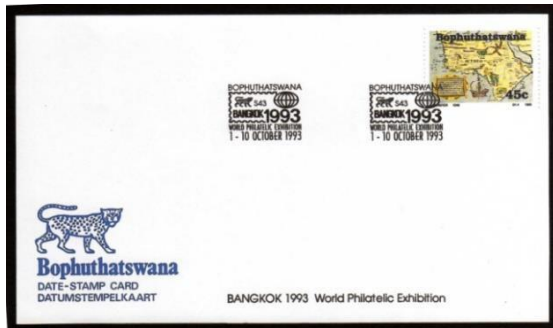
Bangkok 93: World Stamp Exhibition.



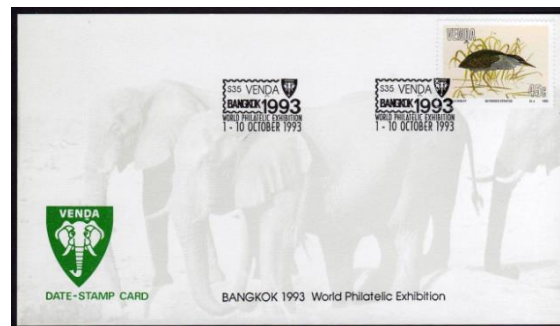
SAPES1993ds-1. Dim 175 x 100mm.



SAPES1993dst-1. Dim. 175 x 100mm.



SAPES1993dsb-1. Size 175 x 100mm.

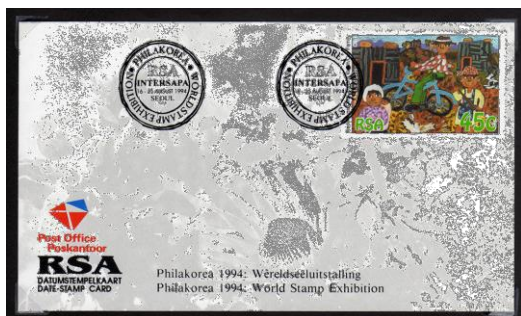


SAPES1993dsv-1. Size 175 x 100mm.



SAPES1993dsc-1. Size 175 x 100mm.

PHILAKOREA 1994: World Stamp Exhibition.



SAPES1994ds-1. Dim. 175 x 100mm.

Singapore 95: World Stamp Exhibition. Singapore 1995.

The miniature sheet depicts the Merlion of Singapore.



SAPES1995ms-1. SACC 910. Dim. 73 x 50 mm.
This miniature sheet came from the first printing.



SAPES1995ms-2. SACC 910a.
The second printing had DEC 1995 bottom left



SAPES1995-10. Size 189 x 102 mm. SACC 6.21
The miniature sheet was from the first printing.
No DEC 1995 in the bottom left corner.



SAPES1995ms-2. CTO on Dec 1995 MS.



SAPES1995ds-1. Dim. 170 x 100mm.



SAPES1995dsn-1.



Namibia MS

Essen 1996: Stamp Show. 13 – 15 June.



SAPES1996dsn-1. Namibian date stamp card.

CAPEX 1996: World Philatelic Exhibition. 8 – 16 June, Toronto



SAPES1996-5. Dim. 189 x 104 mm.

SACC 6.35

SAPES1996pm-1 (868).

The cover features a painting from an old postcard of the Houses of Parliament in Toronto.



SAPES1996ms-1. Mint.

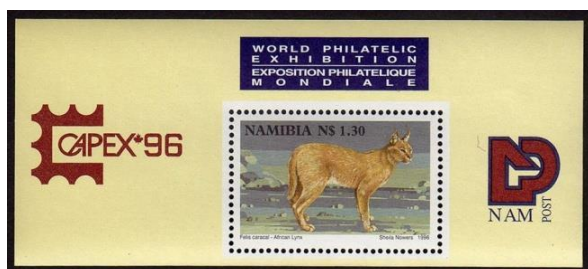
SAPES1996ms-2.

CTO.

Dim. 73 x 50 mm. SACC 952

The design of this miniature sheet was by Alan Ainslie and depicts the Houses of Parliament in Toronto and Cape Town.

Namibia was also present, producing a miniature sheet



SAPES1996msn-1.

Mint

Dim. 73 x 50 mm.



SAPES1996msn-2.

CTO.

SACC 148

The stamp depicts the African Lynx. The souvenir sheet was created by Sheila Nowers.



SAPES1996n-1.

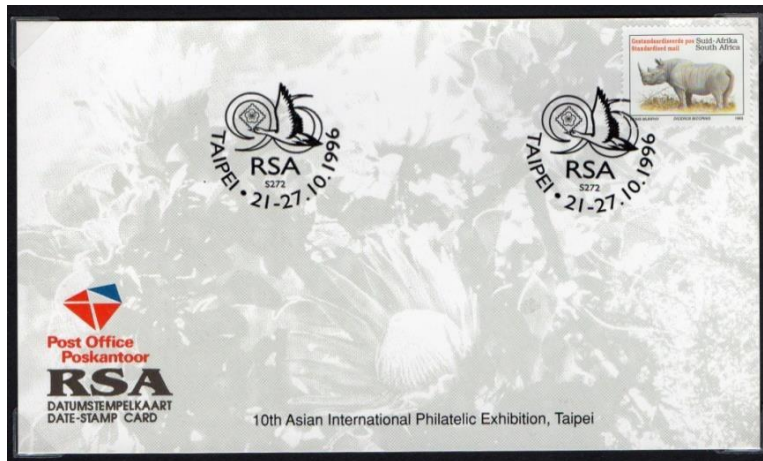
Dim. 189 x 104 mm. Using the South African Post Office envelope.



SAPES1996dsn-2.

Namibian date stamp card.

Taipei 1996: 10th Asian International Philatelic Exhibition. 21 – 27 November.



SAPES1996ds-1. Date stamp card.

China 1997: World Philatelic Exhibition. 12 – 16 February.



SAPES1997-1. Dim. 189 x 104 mm. SACC 6.49

Depicting two Chinese Junks, with the junk motive repeated on the date stamp.



SAPES1997ms-3. Dim. 81 x 62mm. SACC 995
Designed by Alan Ainslie featuring a dragon and a lion.
(SAP, April 1997, 59).



SAPES1997pm-1. 95 (901).
The Chinese writing spells Hong Kong



SAPES1997n-1. Dim. 189 x 104 mm.

SACC 2.20



SAPES1997msn-1.

Mint.



SAPES1997msn-2.

CTO.

Dim. 103 x 67mm.

SACC 169.

50 000 sheets were printed, of which 25 000 went to Hong Kong and 20 00 were used on FDCs. Some 1 500, bearing the first day stamp were sent to collectors with standing orders.



SAPES1997msn-3.

Reprint, notice in top right.

SACC 169a.



SAPES1997ds-1. SAPO date stamp card.



SAPES1997pm-1 (900).

PACIFIC 97: World Philatelic Exhibition. 29 May – 8 June, San Francisco.

The 9th US international exhibition organised by the San Francisco and other California collectors with support from the American Philatelic Society, American stamp Dealers Association and US postal Services. (SAP, June 1997, 94)



SAPES1997ms-4. Dim. 95 x 49mm. SACC 1026

Designed by Alan Ainslie, this sheet features Grocott's, Muirhead & Gowie buildings in Grahamstown, next to the distinctive "Painted Ladies" of San Francisco.



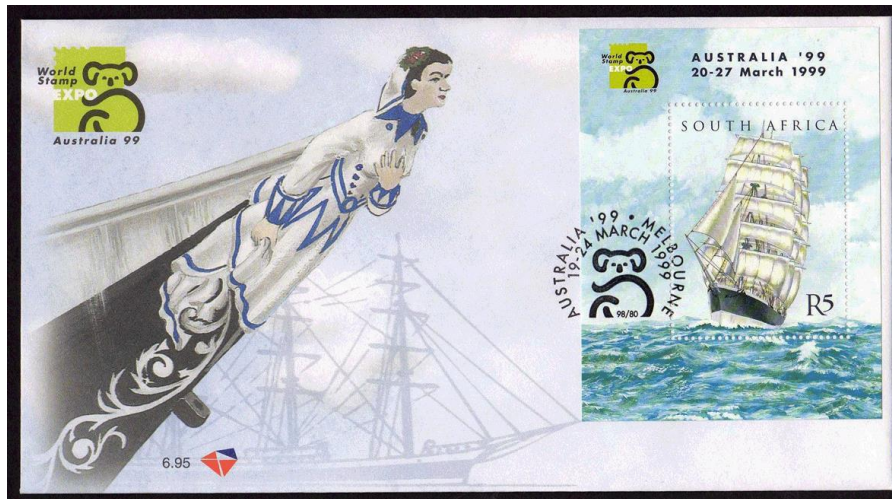
SAPES1997-3. Dim. 189 x 104mm. SACC 6.58.
With the miniature sheet described previously.



SAPESpm1997-2 (916).

Australia 99: World Stamp Expo. Melbourne 19 to 24 March 1999

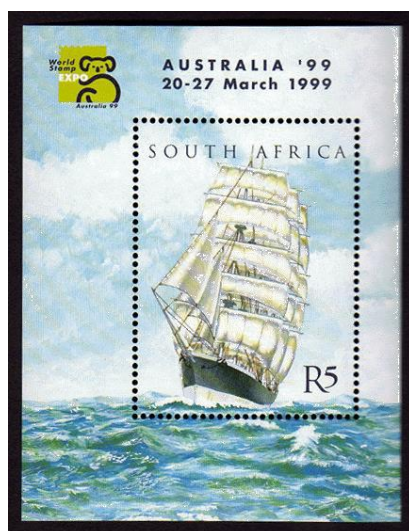
The SA Post Office issued a miniature sheet with a R5 face value and a commemorative cover depicting the figurehead of the sailing ship *Lawhill*. The name was derived from Law Hill, a prominent landmark in Dundee, Scotland. (SAP, April 1999, 56).



SAPES1999-1. Size 189 x 103mm. SACC 6.95



SAPES1999pm-1. 98/80 (996).



SAPES1999ms-1. Mint.
Dim. 65 x 85 mm.



SAPES1999ms-2. CTO.
SACC 1190.

Ibra 99: International Stamp Exhibition, Nuremburg 27 April to 4 May.

The Post Office issued a miniature sheet with a face value of R5 for Ibra (Internationale Briefmarken Weltausstellung) on 27 April. The African Elephant was chosen as a topic to represent the beauty and diversity of South African wildlife. A commemorative cover was also issued bearing the miniature sheet. (SAP, April 1999, 57).

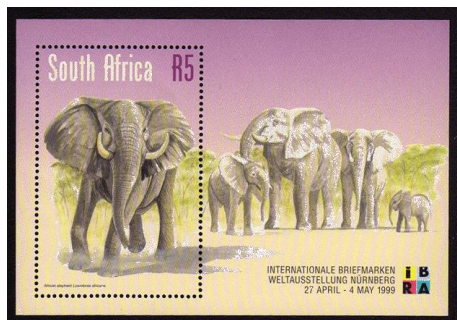


SAPES1999-2. Dim. 189 x 103mm.

SACC 6.97.



SAPES1999pm-2 99/2 (998).



SAPES1999ms-3.

Mint.

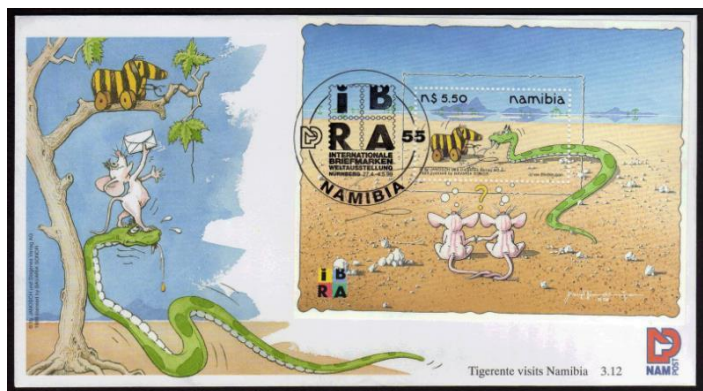


SAPES1999ms-4.

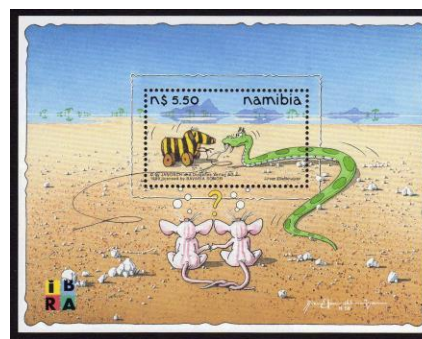
CTO.

Dim. 100 x 68mm. SACC 1193.

Namibia issued a miniature sheet featuring "Tigerente" and a souvenir envelope with the miniature sheet as well. (SAP, June 1999, 89/90)



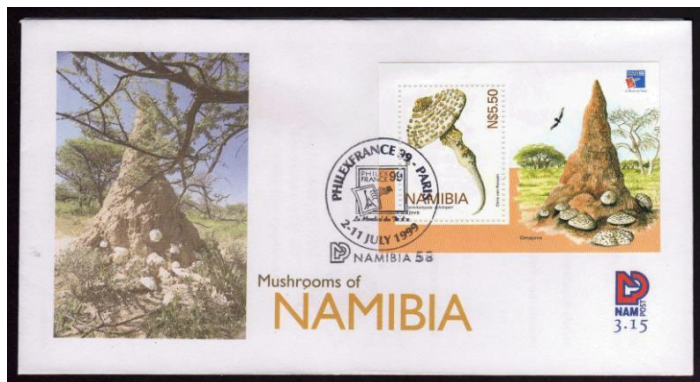
SAPES1999n-1. Dim. 191 x 103mm. SACC 298.



SAPES1997msn-1. Dim. 100 x 84mm.

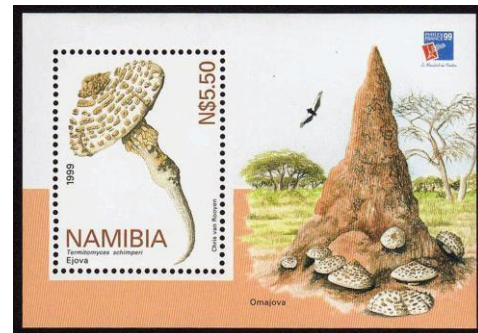
PhilexFrance 99: World Philatelic Exhibition. Paris, 2 – 11 July.

Namibia issued a miniature sheet and a souvenir envelope featuring the miniature sheet as well.
(SAP, June 1999, 90, and August, 119)



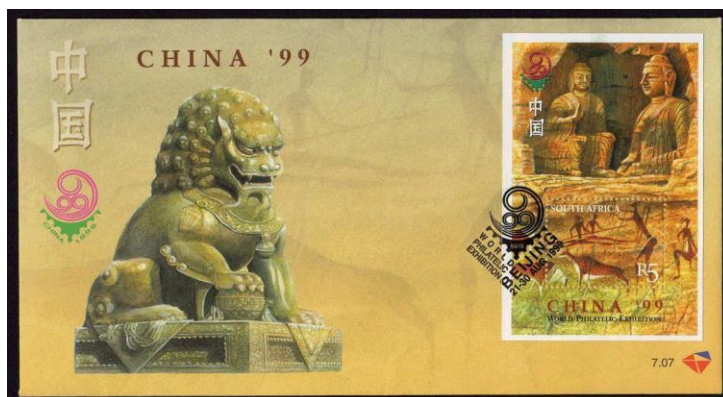
SAPES1999n-2. Dim. 190 x 100mm.

SACC 307.



SAPES1999msn-2. Dim. 100 x 84mm.

China 99: World Philatelic Exhibition. Beijing, 21 – 30 August.



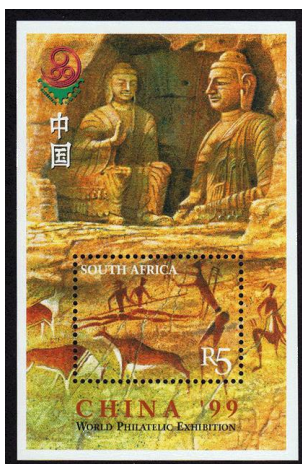
SAPES1999-3.

Dim. 189 x 103mm.

SACC 7.07.

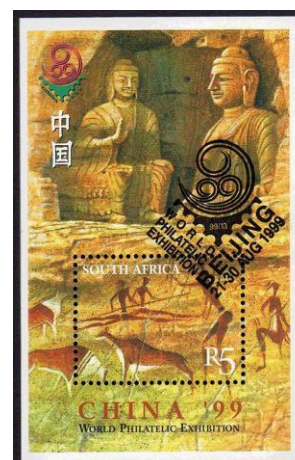


SAPES1999pm-3. (1010).



SAPES1999ms-5. Mint.

Dim. 54 x 84mm. SACC 1228.



SAPES1999ms-6. CTO.

Namibia Post was to use the miniature sheet for the cover but a late change saw the orchid stamps being used on the cover (SAP, October 1999, 161).



SAPES1999n-3. Dimension 190 x 108 mm. SACC 312.

SAPES1999nms-3.

London 2000: International Stamp Show. 22 - 28 May.

The Post Office issued a miniature sheet and commemorative cover on 20 May 2000.

The sheet had a face value of R 4.60 and had two birds on it: the Knysna Loerie (Turaco) and Britain's Robin Redbreast. (SAP, June 2000, 73. SETEMPE, Vol 5 No.3, 9).



SAPES2000-1 Size 189 x 102mm.

SACC 6.115.



SAPES2000pm-1. (1066).



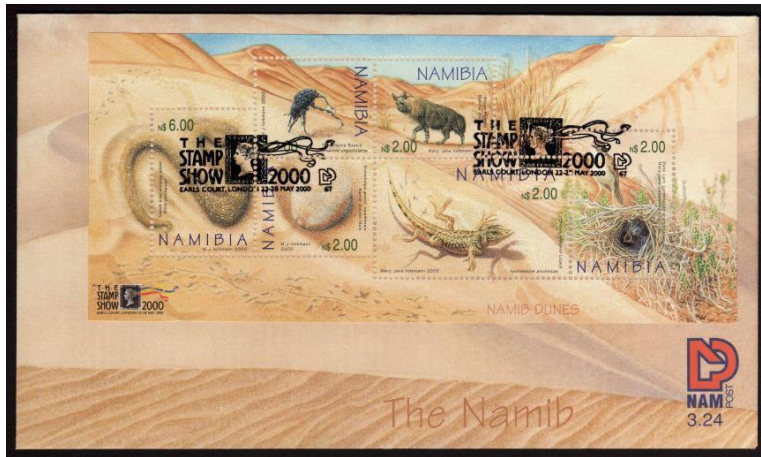
SAPES2000ms-1. Mint Dim.108 x 68mm.

SACC 1249.



SAPES2000ms-2. CTO.

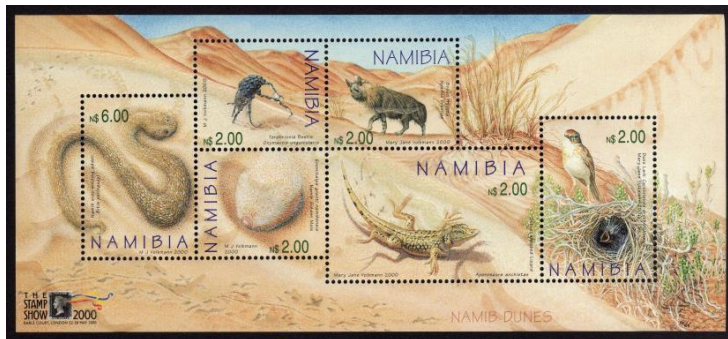
Namibia also partook in the show, with a cover and miniature sheet depicting the animals of the Namib dunes.



SAPES2000n-1 Size 189 x 110mm.

SACC 3.24.

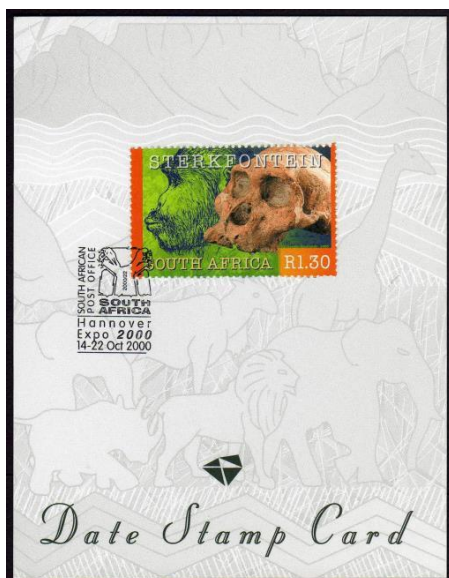
SAPES2000pmn-1



SAPES2000msn-1. Mint. Dim.163 x 73mm.

SACC 1249

Hanover Expo 2000.



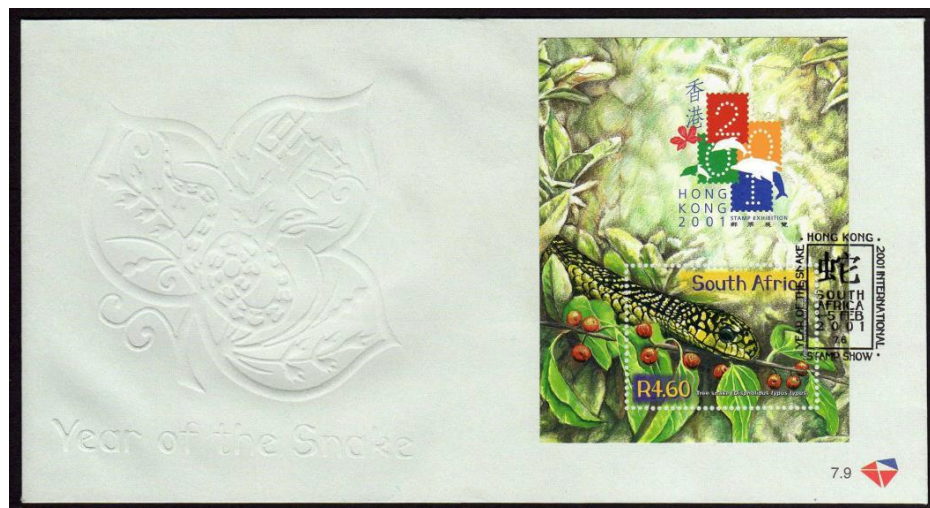
SAPES2000ds-1.



SAPES2000pm-2. (1081).

Hong Kong 2001: International Stamp Show, Hong Kong 1 – 5 February.

No South African Philatelists appeared to have taken part in this stamp show, however the Post Office was represented and it issued a miniature sheet as well as a souvenir cover for the event. The design of the miniature sheet incorporated the Stamp Show logo as well as the celebration of the year of the snake. (SETEMPE, Vol 6 No 1, 2001. 11).

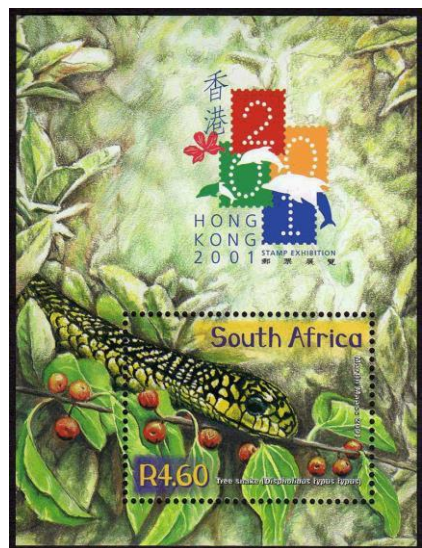


SAPES2001-1 Size 190 x 101mm.

SACC 7.9.



SAPES2001pm-1. (1089)



SAPES2001ms-1.

Mint.

Dim. 65 x 85mm.



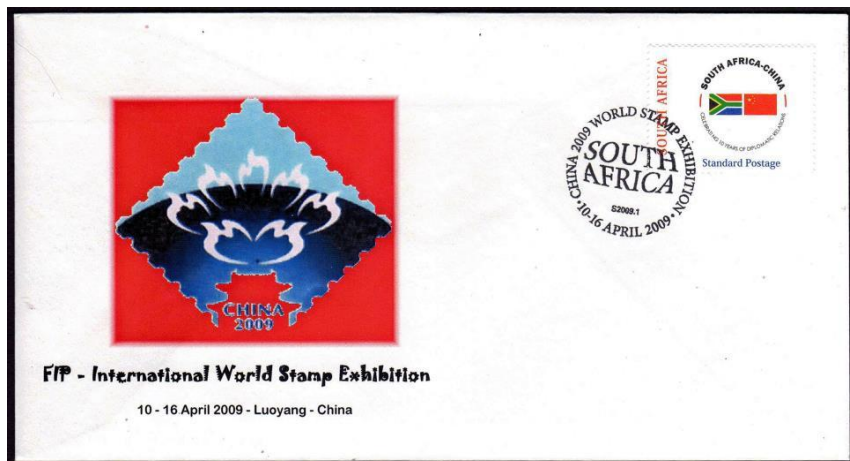
SAPES2001ms-2.

CTO.

SACC 1343

China 2009: 23rd Asian International Stamp Exhibition. 10 – 16 April 2009.

The SA Stamp Study Circle made a souvenir cover with the official date stamp for this exhibition held in Luoyang.



SAPES2009-1.

Dim.

SAPES2009pm-1.

